



**ANNUAL
REPORT**

© Copyright 2025 ME Family Services (MEFS).

All rights reserved. This report contains confidential and proprietary information of ME Family Services (MEFS) and is for the exclusive use of the intended recipients. Reproduction or external distribution in any form is strictly prohibited.

Contents

Message from the Board Chair	04
Message from the Chief Executive	06
Manaaki Tangata	08
Taiao Team	22
Early Childhood Education (ECE)	38
Sponsorships	42
Financial Statements	48
Acknowledgements	50



Peter Sykes

Board Chair
ME Family Services QSM





Kia ora koutou, Talofa lava, Malo e lelei, Kia orana, Namaste, As-salamu alaykum, Greetings.

With a sense of achievement, anticipation, and thankfulness, this will be my last AGM as I have decided to resign from the ME Board and as Chair. My final official role will be at the AGM on **20 November 2025**.

There have been so many people I have journeyed with since our proposal as **Mangere East Primary School** (Tony Drillien), **Nga Manga o Māngere** (Rosie, Alf, ...), and **Papatūānuku Kōkiri Ki Mangere** in mid-1993 — the first contract in December 1993, incorporation in 1994, and the building of the ME Family Centre in 1995.

I want to acknowledge the wisdom of those who blessed our journey and hold our story in their fire — **Jerry Moana, Lloyd Popata, Joe Matata, Maurice Wilson**, and many others — a legacy carried on through **Pania, Qiane, and Te Ahiwaru**.

Liz, Lena, Rebecca, Mohammed, Yahnina, and Ola — thank you for giving me hope and confidence in the Board moving forward, and for enabling me to leave ME in excellent and capable hands.

I also acknowledge the amazing gifts and presence of Carole as our CE, the leadership team, and all those who walk our walk through **ECE, Manaaki Tangata**, the **Taiao Team**, the beating heart of the office, and the fringes like Muramura Atea. I'm sure ME will continue to thrive and regenerate under your nurturing.

I recognise the legacy of those who have journeyed with us — past (**Peter C, Andy C, Rosie, ...**) and present (**Biddy, Dew, Rosi, ...**) — as well as the many staff and members of ME Family Services who continue to embody our kaupapa.

Karen (Mother of the Centre), **Sue** (first part of the team), **Nicola** (Selwyn Church), **Steph** (Mangere East Primary), **Karen Mose** (Mangere Intermediate/Southern Cross), **Teresa** (Aiga Fanau/Rosie Brown), **Anthony** (MEPS), **Roger & Lynn** (Mangere East People's Centre/Community Centre) — all have been part of the journey since 1993.

And to the legacy of those who have gone before us — past (**Peter C, Andy C, Rosie, Mama Tere, Maurice, Joe, and Dawn**) and present (**Biddy, Dew, Rosi, Aunty Ra, ...**) — blessings for the gifts that keep giving. The list is in the hundreds.

And amidst it all, to my **whānau**, who have been part of this entire journey — my love and thanks always.

I'm not hanging up my boots just yet for your peace of mind. There's a little more work to do with the Board and the AGM, after which I'll be focusing on **whānau**, the **Hawks**, the **South Auckland Greens**, and some smaller organisations — **Better Blokes** and **Auckland Teaching Gardens** — when I'm not watching **Taiao** for inspiration.



Carole Tana-Tepania

Chief Executive
ME Family Services





A Year of Resilience and Regeneration

Tēnā koutou katoa. Warm greetings to our staff, Board, partners, and the entire community.

It is with immense pride that I present this report on a year defined by resilience, deep engagement, and a clear path toward a thriving and regenerative people and place. In a dynamic and often uncertain operating environment, our commitment—the belief that our community deserves accessible services and programmes that meet their needs—has never wavered. The success we celebrate today is truly the collective mahi of every person associated with our organisation.

Our core social work and wellbeing support, encapsulated in Manaaki Tangata, faced constant uncertainty regarding contracts this year. Yet, the team not only endured but delivered quality, consistent support, demonstrating extraordinary dedication. Our reach extended to over 400 individuals, walking alongside them as they navigated challenges.

We must also acknowledge the Board's deep-seated belief in our mission, which resulted in the continued financial support of our Diversity Mentoring and Resource Room beyond external funding. This ensures our dedicated support for children and their whānau remains uninterrupted.

In our ECE (Early Childhood Education), despite the challenges of a decreasing roll, we successfully retained all our talented staff, confirming a strong, values-driven workplace culture. This retention helped us deliver continuity of care, which was reflected in whānau feedback where families consistently expressed gratitude for our free kai programmes and essential school transition visits. Our daily practice embeds sustainability, nurturing tamariki understanding of kaitiakitanga from an early age, while cultural activities ensure our tamariki feel a strong sense of belonging and engagement.

Our environmental services, have enjoyed a year of expansion and local impact with the support of Foundation North. We continue to engage locals and rangatahi (youth) in vital environmental activations at through stream, pest-free and sustainability projects. Beyond our formal contracts, we deepened our commitment to sustainable practices.

Now funded through a funding agreement we are delivering workshops focused on living sustainably, māra kai (food gardens), and mana to

te kai; empowering whānau with practical tools for environmental stewardship.

Management's deep belief in our community informs our collaborative, culturally responsive approach. This foundational philosophy is upheld by our commitment to our people; we continued to invest in staff through relevant Professional Development and, crucially, deepened our accountability to Te Tiriti o Waitangi by implementing a centre-wide decolonising workshop, Te Pumaomao. This internal strength translates our ability to foster strong, reciprocal relationships across Mangere strengthening our collective capacity support the people and whānau we all serve.

The Board has provided robust leadership, bringing a crucial range of strengths, expertise, and insights. Their mahi is currently focused on developing a new strategy that is relevant and readily understood by our service users and the wider community, ensuring our future direction is clear and purposeful. We look forward to sharing this in 2026 confirming our priorities ahead.

This year the Board confirmed a small budget to invest in local youth, sponsoring Otahuhu U11 White Leopards, Mangere East Hawks Rugby League teams, and a trophy for the Manu Kōrero regional competition.

Through the passion and commitment of so many, we have achieved a strong position locally, a significant voice nationally, and growing international influence.

Our success belongs to us all. We extend our deepest gratitude to:

- **Every member of our incredible staff for their daily dedication;**
- **Our volunteers for sharing their skills and passion;**
- **Our partners and funders for their invaluable support;**
- **Our community participants for their trust and engagement; and**
- **Our Board for their governance and vision.**

Thank you for being part of this exceptional year.



The Manaaki Tangata (MT) Team at ME Family Services delivers holistic social work and wellbeing support that upholds the values of manaaki tangata, manaaki taiao, and manaaki whānau. The team works to strengthen families, enhance resilience, and ensure that tamariki, rangatahi, and whānau have access to the right support at the right time.



MANAAKI TANGATA'S MAHI AT A GLANCE

Service Reach & Referrals



400+

TOTAL REFERRALS

With a consistent 95-99% satisfaction rate across closed cases.



293

COMMUNITY ONE-OFF SUPPORT

Growth from 193 (Jan–Apr 2024) to (Apr–Jun 2025), reflecting increased demand amid cost-of-living pressures.



100

NEW REFERRALS

Average per term, with longest retention averaging 6 months — typically for families with complex needs.

Programmes Delivered



PREVENTATIVE PROGRAMMES

Seasons for Growth, Stormbirds, Friends for Life, PACT Boxing, Hoy Kusinero and Ahuru Tangata SAFE, Buena Relacion.



SCHOOLS

3 Colleges and 9 Primary / Intermediate schools participating in the boosting rangatahi resilience and wellbeing.

Partnerships & Impact



30+

ACTIVE COMMUNITY PARTNERS

Strong collaboration with WINZ, Kāinga Ora, Turuki Health, Monte Cecilia, Catholic Caring Foundation, and Kindness Collective.



SWiS team pivotal in achieving positive outcomes in housing advocacy, school attendance improvement, and access to mental health and addiction support.



Letters of impact from partner schools reinforced the trust and high regard for MEFS' social work team.

Training and Workforce



100%

SOCIAL WORK REGISTRATION

All social workers-maintained registration and First Aid certification.



3

NEW GRADUATE SWiS HIRED

Practicum students from MIT and University of Auckland embedded as part of succession planning.



REGULAR ATTENDANCE AT PROFESSIONAL LEARNING:

Addictions 101, Mental Health 101, FLO Talanoa Suicide Prevention, Te Pumaomao (Aug 2025).

Seasons for Growth Companion Training delivered to **11 agency staff**, expanding MEFS' regional influence.



Social Worker in Schools (SWiS)

Overview

Throughout the 2024–2025 year, the ME Family Services Social Work in Schools (SWiS) team partnered with seven schools across Māngere, Ōtāhuhu, and wider South Auckland to deliver structured group programmes focused on emotional regulation, resilience, friendship, and life skills.

These programmes complemented individual social work support, offering group learning spaces where tamariki could develop confidence, emotional literacy, and positive peer relationships through hands-on, culturally responsive facilitation.



Programme Reach and Key Data

Programme	Schools Delivered	Students Reached	Focus Area	Duration
Seasons for Growth	Viscount, Waterlea, Mountain View, Jean Batten, Southern Cross	20+	Grief, change, emotional regulation	8–10 weeks
Stormbirds	Southern Cross, Favona, Robertson Road School	16	Resilience through natural disaster recovery	8 weeks
Friends for Life	Favona, Viscount, Robertson Road School	6	Friendship, emotional literacy	8 weeks
Hoy Kusinero (Cooking)	Southern Cross	16	Life skills, teamwork, resilience	6 weeks
PACT Boxing	Māngere Bridge	8–10	Anger management, discipline, physical wellbeing	10 weeks
Buena Relacion	Southern Cross	7	Great relationships	5 weeks

Total students reached: ≈100+ tamariki across 7 school sites

Facilitators involved: SWiS team, SENCOS, counsellors, external partners (CLM Sport, PACT Boxing, Child Matters)

Qualitative Outcomes and Impact Themes

Emotional Regulation & Resilience

Many students entered these programmes carrying experiences of grief, loss, or household instability.

Through programmes like Seasons for Growth and Stormbirds, tamariki learned how to name emotions, recognise change as normal, and identify safe coping strategies.

“Children shared that change is just a part of life.”

– Viscount School SWiS

“Students now know how to cope on difficult days, remember good times, and identify support networks.”

– Southern Cross Campus



Self-Discipline and Confidence Building

The PACT Boxing programme at Māngere Bridge School proved transformative for students with challenging classroom behaviour.

Teachers observed improved listening, self-control, and respect for authority.

Participants reported better anger management and increased fitness and self-confidence.

SENCO feedback confirmed that “students once hard to manage showed improved emotional control and peer relationships.”

“All participants expressed higher emotional regulation when faced with challenges — both in class and outdoors.”

– PACT Boxing Evaluation

Social Skills & Friendship

At Favona and Waterlea Primary, programmes targeted younger tamariki (6–9 years old) to build empathy and teamwork.

Friends for Life introduced key values of respect, sharing, and cooperation through guided reflection.

Seasons for Growth supported tamariki to express feelings safely and rebuild peer trust.

Waterlea's Year 3 girls' group emphasised confidence and coping with life changes, addressing transitions and behavioural triggers.

“We want our students to thrive in social and peer situations, recognise how to ask for help, and build self-confidence.”

– Waterlea School SWiS

“The programme promotes resilience and mindfulness through creativity, art, and goal-setting.”

– SWiS Facilitator

Life Skills & Wellbeing

The Hoy Kusinero (Cooking) programme delivered at Southern Cross and Favona schools offered a fun, hands-on way to teach teamwork, safety, and communication.

Participants learned time management, shared responsibilities, and collaboration.

Cooking sessions became a medium for resilience, showing how setbacks in the kitchen relate to real-life challenges.

“Learning to respect others' ideas and applying cooking as a way to teach resilience.”

– Programme Reflection



Seasons for Growth activity at SCC

Summary of Key Outcomes

Impact Area	Evidence of Change
Improved Emotional Literacy	Students gained vocabulary for feelings and change; shared emotions more confidently in safe spaces.
Behavioural Improvements	Noticeably reduced anger incidents and improved classroom focus, especially after PACT Boxing.
Resilience and Self-Efficacy	Participants reported using learned strategies at school and home to manage stress.
Positive Peer Relationships	Friendship and communication skills increased, particularly among younger tamariki.
Confidence and Engagement	SWiS noted improved participation and willingness to take leadership roles in class.

Partnerships and Collaboration

Programmes were co-designed with: School SENCOs, counsellors, and leadership teams.

Community partners: PACT Boxing, CLM Sport, Child Matters, Oranga Tamariki (reporting compliance), Catholic Caring Foundation (Catholic Diocese of Auckland), Kindness Collective.

Internal collaboration: SWiS social workers worked alongside Manaaki Tangata and Taiao teams to integrate holistic wellbeing (kai, waste, and garden workshops).

Forward-Looking Insights

High demand: More schools are requesting repeat or new programmes, especially Seasons for Growth and Friends for Life.

Systemic need: SWiS identifies rising demand for group resilience programmes in response to cost-of-living stress and whānau instability.

Future focus: Embed parental engagement components, expand Ahuru Tangata SAFE and Rangatahi Leadership modules for older students. Created a follow-up program called Kotahitanga Program.

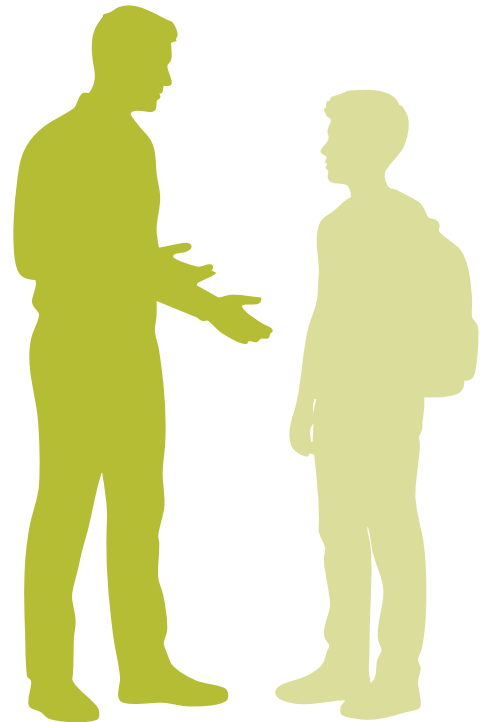
Impact highlight

“MEFS has been our voice, fighting for our rights, helping us secure housing, and organising food parcels when we had nothing. We need more organisations like MEFS in our community; without them, families like mine won’t survive this economic inflation.”

– N.E.

“ME Family Services (MEFS) supported our whānau through our most challenging time, offering help that far exceeded our expectations. They treated us with such dignity and kindness, and their commitment has made a real and lasting difference. Mangere is truly a better place because of their work.”

– Bureta Mauigoa



“ME Family Services (MEFS) is doing vital work. They supported me from Emergency Housing to finally securing a safe, beautiful home. Their exceptional professionalism and resources, like food parcels and clothing, were essential in restoring my mental wellbeing and giving me a better lifestyle. The Mangere community needs more of this amazing support!”

– Niotangi Ngatoko

Conclusion

The SWiS group programmes delivered by ME Family Services continue to make a profound difference in the lives of tamariki and their whānau across Māngere and Ōtāhuhu.

By building emotional literacy, connection, and confidence within school environments, these programmes strengthen both individual resilience and community wellbeing — fully aligned with MEFS’ mission of manaaki tangata, manaaki taiao, and manaaki whānau.

Diversity Programme SAFE [Ahurutanga]

Overview

The SAFE [Ahurutanga] Programme continues to provide affirming, inclusive, and culturally grounded spaces for rainbow rangatahi across Auckland. Rooted in whakapapa, identity, and manaakitanga, the programme empowers young people to understand and express who they are with confidence, while equipping teachers and schools to embrace gender diversity and inclusion as part of everyday practice.

Facilitated by our Diversity Worker, this kaupapa fosters visibility, self-worth, and community belonging - nurturing a thriving and regenerative people and place.



Quantitative Outcomes



1 NEW SCHOOL

Introduced the SAFE Programme this year, demonstrating increased demand and school readiness to embed inclusive practices.



100+ RANGATAHI PARTICIPANTS

Engaged across three Auckland schools.



24 TEACHERS

Participated in professional development sessions focused on inclusivity and diversity.



44 PARTICIPANTS

Completed the Ahuru Tangata SAFE Programme.



36 NEW STUDENTS

Engaged on Ahuru Tangata SAFE Programme.



14 COMMUNITY EVENTS

Attended, collaborating with organisations.



7 SOCIAL CHANGE ORGANISATIONS

Collaborated with to expand awareness and reach.



12 COMMUNITY MEMBERS

Supported to attend and compete in the Apai Netball Nationals.

Qualitative Outcomes

Affirmation of Identity: Over 100 rainbow rangatahi deepened their understanding of identity through talanoa, whakapapa exploration, and the Ko Wai Au framework, enabling many to confidently articulate their gender journey.

Culturally Grounded Safe Spaces: SAFE sessions built consistent, youth-led environments of trust and belonging, with regular check-ins and goal-setting that improved school engagement and retention.

Teacher Transformation: Professional development workshops helped teachers reflect on inclusive classroom practice, respectful language use, and the importance of gender-affirming environments.

Community Presence: Our involvement in 14 events — from school open days to social impact collaborations — strengthened community dialogue on diversity, equity, and wellbeing.

“This space helped me realise I’m not alone.”

– Student, SAFE participant

“It’s amazing to see our youth lead with pride and purpose.”

– Whānau member

“Our teachers now think differently about inclusion - not just for rainbow students, but for all.”

– School Leader



Conclusion

The SAFE [Ahurutanga] Programme has grown into a recognised model of inclusive practice across Tāmaki Makaurau. The combination of student mentorship, staff learning, and community partnership creates a ripple effect of change in schools and beyond.

With increasing demand from new schools, the next step is to secure sustainable funding to expand delivery, train new facilitators, and develop a wider network of youth mentors.

SAFE continues to affirm that *when rangatahi feel seen, they thrive - and when they thrive, our communities flourish.*

Resource Recovery

Overview

The Resource Recovery continues to be a cornerstone of ME Family Services' vision of para kore — a zero-waste, community-driven model that transforms unwanted items into resources for whānau in need.

By working closely with Auckland Airport, local organisations, and schools, the Resource Room provides immediate relief to families while reducing landfill waste and building a circular, mana-enhancing local economy.

Through the generosity of 187 donors, including local whānau, businesses, and partner organisations, 14,091 kg of usable goods were successfully diverted from landfill this year.

This incredible effort demonstrates ME Family Services' commitment to a thriving and regenerative people and place - where waste becomes a resource, and community wellbeing grows through collective action.

Over 11.5 tonnes of donations came from businesses and organisations, with an additional 2.5 tonnes contributed by local families. These items - from upcycled timber, strollers, and



furniture to clothing, books, and household goods - were redistributed to community initiatives, Mangere East Library, Mangere East Community Centre, Papatuanuku Kokiri Marae, Otahuhu Rovers Rugby League Sports Club, Mangere East Hawks Rugby League Club, Turuki Health , and directly to whānau in need.

Each donation not only reduces waste but strengthens relationships, supports local resilience, and nurtures a circular economy that keeps value within our community.



The Resource Recovery mahi demonstrates practical climate action and whānau wellbeing in equal measure.

- 187 donors contributed, including Auckland Airport Network, Manawa Bay, Middlemore Foundation, and Swissport.
- 556 Whānau directly supported with essential items such as clothing, furniture, and appliances.
- 25 Community Organisations supplied with resources for redistribution.
- 200+ Whānau engaged through school open days and community events.
- 3 Schools partnered for Whānau Days — Mangere Central, Nga Iwi, and Southern Cross Campus.
- Partnerships with Turuki Health, Monte Cecilia, Kāhui Tū Kaha, Te Hononga o Tamaki me Hoturoa and local schools strengthened referral pathways.



Community Feedback



“The clothes and furniture helped us feel settled - like we finally had a home.”

- Whānau recipient

“The warm jackets and bedding have kept me and my children safe through the cold months.

Georgina made me feel heard and important in a vulnerable time.”

“It’s incredible to see items once considered rubbish becoming treasures again.”

- Volunteer

“We could see how much this meant to our students’ families.”

- School staff

Types of Support Provided

The Resource Recovery Room continues to meet a wide range of community needs through the redistribution of quality donated goods. Each item represents more than just a resource - it supports dignity, stability, and connection for whānau across Māngere and surrounding areas.

During this reporting period, the following key supports were provided:

Travel Support: Suitcases and extra clothing were provided to families travelling overseas for funerals, family reunions, or relocations — ensuring ease and dignity during emotional or transitional times.

Whānau Mobility: Strollers and prams were gifted to walking mums, families with multiple tamariki, and local Early Childhood Centres as the warmer season increased outdoor activity.

Vision Support: Reading glasses were distributed to kaumātua and young people who had misplaced or could not afford replacements, enabling them to manage daily tasks with confidence.



Community Connections: Support extended to local organisations such as VisionWest whānau based in Māngere and residents from Christina's Rest Home, where families visited loved ones and personally selected clothing.

Local Partnerships: Contributions were made to sports clubs and community groups, including the Ōtāhuhu Leopards and Māngere East Hawks League, for prize-giving and team events that build community pride.

Essential Household Needs: Families declined by Work and Income NZ were supported with linen, bedding, cutlery, cooking utensils, and clothing to meet basic living standards.

Programme Integration: Clothing and equipment were supplied for participants of MEFS programmes such as Te Puna Oranga, Maara Kai Ora, and Stream Restoration activities.

Support for Partner Agencies: Resources were shared with families engaged through Oranga Tamariki, ensuring tamariki and parents had essential clothing and household items.



Child Growth and Development: Ongoing provision of children's clothing helped whānau manage rapid growth stages and school readiness.

Disability and Special Needs Support: Families caring for children with disabilities received extra clothing and practical items to help manage daily mishaps and mobility challenges.

Emergency and Court Support: Families involved in urgent legal or court matters were assisted with suitable clothing to maintain confidence and self-presentation.

Time Traders Support: Members of the Time Trading network received additional assistance with clothing for hospital stays, older children, and mokopuna.

Income-Related Support: Families impacted by job loss or reduced income were prioritised for household and clothing resources.

Education and Travel Needs: Clothing, footwear, and personal items were provided for students attending school camps or education trips.

Māmā and Pēpi Support: Pregnant mothers and families with newborns were supplied with essential baby clothing, accessories, and care items.

Qualitative Outcomes

Restoring Dignity: Families described feeling valued and respected when accessing the Resource Room - the space was intentionally designed to uphold mana through organised, welcoming displays.

Collaboration Across Sectors: Strong partnerships with Auckland Airport, Middlemore Foundation, Te Hononga o Hoturoa ki Tāmaki, ATWC, Turuki Health, Work & Income, and Kainga Ora enabled wider distribution and wraparound referrals to Manaaki Tangata.

Community Awareness: Through participation in major events like 275 Day and school open days, the RRR showcased the practical benefits of waste minimisation while modelling compassion and community self-reliance.

Crisis Response: Immediate support provided to whānau affected by fires, flooding, and cost-of-living stress, ensuring basic household needs were met promptly and with care.



Conclusion

Through the dedication of the Resource Therapist and the ongoing support of partners, over 14 tonnes of items have been recovered and rehomed - transforming waste into wellbeing.

The Resource Room is not only a waste minimisation project but also a powerful social connector, bridging environmental sustainability with family resilience.

As the programme continues to expand, additional funding and space will be key to scaling this impact, ensuring that every whānau in need can access resources that enhance dignity, comfort, and hope.

Manaaki Tangata Captured Stories



MT Team Building Event



Te Tiriti o Waitangi protest at Ihumatao



SWiS Program at SCC with David Tua



Seasons for Growth - Train the Trainers Session (Companion Training)



SFG Program at SCC



The Taiao Team at ME Family Services continues to serve as a model of community-led ecological regeneration, empowering whānau and schools in Māngere-Ōtāhuhu to connect deeply with people and place.

What began as a small “Talking Rubbish” initiative has matured into a comprehensive, place-based programme that weaves together waste reduction, environmental education, food sovereignty, and biodiversity restoration.



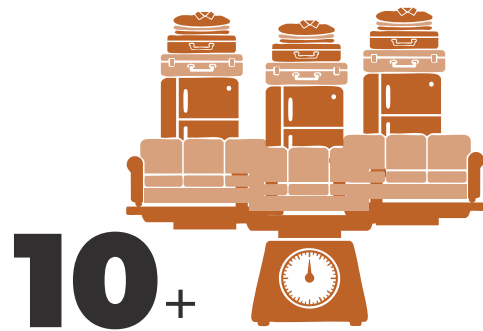
TAIAO TEAM’S MAHI AT A GLANCE

Community Reach and Engagement



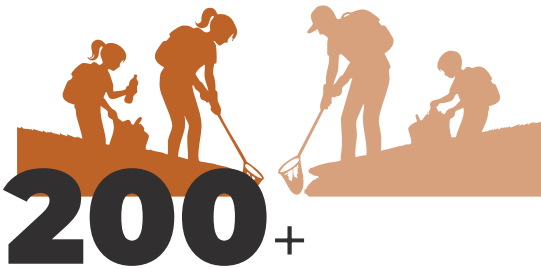
PEOPLE

Engaged through Taiao programmes and community activations.



TONNES OF WASTE

Diverted from landfill, through waste education, the Resource Recovery Room, and reuse networks.



VOLUNTEERS

Participated in service days, trapline maintenance, planting and restoration events.



ORGANISATIONS AND SCHOOLS

Collaborated across Māngere, Ōtāhuhu, and the wider South Auckland region.

Te Puna Oranga / Maara Kai Ora

Overview

Te Puna Oranga — ME Family Services' community garden and maker space — continues to flourish as a hub for environmental learning, food sovereignty, and community wellbeing. Throughout the year, the team connected with local residents, rangatahi, schools, and partner organisations to grow knowledge, kai, and circular solutions for our community.

Together with the Māra Kai Ora programme, Te Puna Oranga engaged over 100 participants through workshops, school visits, volunteering days, and community events — nurturing deeper connections between people, whenua, and kai.



Community Engagement & Partnerships

- Collaborations included Sustainable Schools South Auckland, Beautification Trust, Auckland Council, and local residents contributing to ongoing environmental restoration and education.
- The team participated in community festivals such as the Mangere East Festival (Nov 2024), showcasing vermicompost products and sharing kai from the garden with hundreds of visitors.

Sustainability & Circular Economy Outcomes

- Within Te Puna Oranga, food scraps were consistently composted (approx. 2–3kg per week) and used to produce over 60L of vermi-juice and dozens of kilograms of vermicastings, which were distributed or sold to local whānau and schools.
- Upcycled garden materials and reuse of fabrics supported creative sustainability, such as handmade upcycled gifts for Taiao initiatives





Māra Kai Ora – Growing Knowledge, Kai, and Connection

The Māra Kai Ora workshops provided hands-on learning around seed propagation, composting, and rongoā Māori practices, supporting whānau to start or enhance home gardens.

Key highlights include:

- Sharing mātauranga on biodiversity in the soil, soil health, and harakeke weaving (Raranga Workshop).
- Harvests shared with the community - including silverbeet, lettuce, taro leaves, radish, and broad beans - ensuring kai grown was kai shared.
- Strengthened ties with schools such as Nga Iwi and MIT through student-led projects and resource-sharing (e.g., worm tea and seedlings).

Social & Educational Impact

Te Puna Oranga operates as a living classroom, where learning extends beyond horticulture to wellbeing, creativity, and cultural identity:

- Living Resourcefully and Repair Café workshops fostered repair, reuse, and resilience mindsets.
- Maramataka (Māori lunar calendar) principles guided planting and harvesting, embedding mātauranga Māori and seasonal awareness into everyday practice.

Economic & Community Resilience

Through koha-based exchanges, market stalls, and social enterprise efforts:

- Vermi products (vermi-juice and castings) were sold at community events, generating modest income to reinvest into garden development.
- Koha system for harvests ensured equitable access to fresh, locally grown produce, promoting food security and wellbeing.

Outcomes

- Strengthened whānau resilience and food security.
- Deepened understanding of whakapapa and kaitiakitanga.
- Created employment and volunteer pathways through facilitation and workshop hosting.

Te Puna Oranga and Maara Kai Ora embody ME Family Services' vision: thriving and regenerative people and place — growing together, healing together, and creating abundance from the ground up.





Reflections & Next Steps

The year reinforced the importance of creating regenerative spaces that empower community participation and self-sufficiency.

Next year, Te Puna Oranga aims to:

- Expand the Māra Kai Ora learning series.
- Strengthen compost and seedling systems to increase production capacity.
- Develop a permanent outdoor learning zone for workshops and whānau engagement.
- Continue integrating mātauranga Māori and community co-design into all garden activities.

In essence, Te Puna Oranga and Māra Kai Ora are living examples of the ME Family Services vision — where caring for the whenua is inseparable from caring for people.

Te Puna Oranga has grown into a thriving hub for kai sovereignty, environmental learning, and circular enterprise.

- 26 community members graduated from the Maara Kai Ora 10-week programme, with two graduates now training as facilitators — demonstrating intergenerational leadership.
- The programme supports participants from awareness → skills → confidence → action → belonging. By mid-programme, 94 % of participants felt confident applying maara knowledge at home, and 36 had already started home gardens.
- Hands-on learning included composting, soil health, and rongoā practice. Whānau also connected to whakapapa, kai stories, and hauora.
- The Te Puna Oranga Pop-Up Shop embodies circular economy principles — selling seedlings, rongoā, and worm tea, all grown onsite, with profits reinvested to sustain the Kaupapa.



Feedback - Maara Kai



I joined the program Te Maara Kai oranga to gain knowledge within the garden. I utterly enjoyed the time, experience and most of all like minded people who I call friends. I've learnt so much within the 10 week programme from learning about permaculture, how the elements help healthy growing. How important soil health helps plants thrive, preparation of garden space for planting, learnt different ways of making natural fertilizers and plant food, germinating seeds to seedlings and planting into garden, harvesting plants and cooking and eating it.

10weeks wasn't enough so I joined the next semester and was able to help facilitate some classes with my knowledge gained.

I enjoy my time in the garden it's peaceful and fills my happy cup. I appreciate the support from Raquel who guides me through this journey. Also the skills and knowledge from Toha and Vern.

I started gardening last spring and to now my garden is thriving. I've grown sliverbeet, spinach, cabbage, kale, broccoli, beetroot, carrots, potatoes, cress, onions red and brown, garlic, tomatoes, cucumber, spring onions, pineapple red and yellow varieties, feijoa trees, passion fruit, oregano, thyme, rosemary, tarragon, and lots of beautiful and colorful flowers.

I love looking out my window gazing at my garden knowing I did that, I love eating the food I grow because I grew that without using chemicals or harsh shop brought fertilizers.

Yvonne



I enjoyed my time and being a part of the Maara Kai Ora Programme. I loved being in the garden, it's an Oasis, a hidden gem, a paradise, lots of beautiful plants (healing) and you have all created a wonderful and peaceful place. Being surrounded by people (meeting students, community) with a passion for gardening, wanting and ready to learn, really made Thursday mornings a special day for me.

Learning with and from each other, was valuable and I loved the experiences.

I was able to top up on what knowledge I already had (relearning), and learned many new things. I have made small steps and improvements to my garden plot at home.

This programme benefitted me so much and I'm very grateful to all of you.

Kia Ora,
Aroha

My Journey with Maara Kai Ora

Before Maara Kai Ora, I had never planted a garden in my own backyard. I was still deep in my healing journey, carrying years of trauma that I didn't yet know how to move through. But as I began learning to grow my own garden at home, something shifted. That space became my sanctuary—a place of healing, guidance, and quiet connection with my ancestors. It's now my sacred space, my paradise, where I go to listen, to reflect, and to restore.

I'm deeply grateful to have a garden at home. It's helped me save money on fresh produce, reduce household waste through composting, and live more sustainably. But more than that, it's taught me that I can give back—not just to my whānau, but to Papatuanuku herself. Through nurturing my plants and feeding my family with kai grown from aroha, I've found a powerful way to contribute.

Maara Kai Ora didn't just teach me how to garden—it reminded me that healing, giving, and living in harmony with the earth are all connected. For that, I am truly thankful.

Sophee



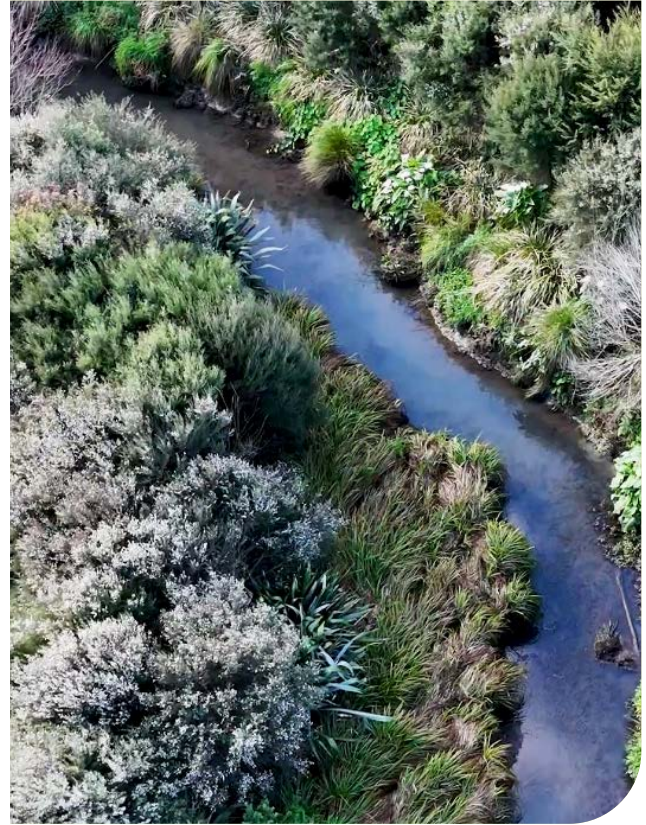
Harania - Stream Regeneration

Overview

The Harania Stream regeneration kaupapa continues to grow as one of Māngere's strongest examples of community-led environmental recovery.

This year's mahi reflected deep partnerships between residents, schools, Mana Whenua, local organisations, and national networks - all working towards a shared goal of restoring ecological balance and cultural connection within the Harania catchment.

Favona Road School and Te Kura Māori o Ngā Tapuwae students participated in awa-based science and mātauranga Māori learning.



Biodiversity and Environmental Outcomes

- **40+ tamariki** and **rangatahi** explored ecological systems, learned trapping and monitoring, and gained early experiences in kaitiakitanga.
- **MIT students** undertook tertiary field experience on the awa, linking social and environmental wellbeing.
- The **Harania Stream** is regenerating through the growing awareness and actions of the whole catchment.
- **Local Māngere residents, groups, and businesses** are now aware of the streams in their neighbourhoods, engaging positively with them, and taking action at home and in the community.
- **Children and young people** are learning about their local streams and have hands-on opportunities to care for them through field education and water monitoring using the Wai Care framework.

- Recorded 20 inanga pods, 6 tuna, kōtuku, pūkeko, mokomoko, and kotare — clear indicators of thriving habitat.
- Regular hazard and pollution monitoring (oil slicks, moth plants, algae) led to timely Council remediation and fencing.
- Maintained monitoring during the Flood Resilience Project with Fulton Hogan, adopting full PPE and safety inductions for kaimahi.



Community and Education Engagement

Engagement Type	Participants	Description
Volunteers	72	Supported clean-ups, events, and awa monitoring
Local Adults (non-volunteers)	102	Attended education sessions, workshops, and clean-up days
Children and Rangatahi	170	Hands-on stream science using the Wai Care framework
Total Individuals Engaged	344	Direct, in-person awa engagement over the year



Harania hiko with whaea Lisa

140 tamariki from Favona Road School took part in water quality and clarity testing sessions.

A further **30 community youth** participated in additional hands-on stream activities.

Education sessions promoted curiosity about ecosystem health, pollution prevention, and the link between awa wellbeing and human wellbeing.

Children learned to observe species, test pH and turbidity, and understand the flow of contaminants and nutrients within their local stream system.

“The awareness the local community has received about the Harania Stream has been welcomed with open arms — the future of our stream is looking bright.”

— Harania Stream Coordinator, 2025

Cultural Leadership

Integration of te reo and tikanga by Tuatea and team reinforced Māori environmental values and safe practice by the awa.

Participants experienced cultural pride through a kaupapa Māori lens, strengthening whānau connection and identity.



Be The Change Project presentation by Vijay Rajan

Be The Change Project

Māngere – Flood-Affected Neighbourhoods

2

EVENT DAYS

24 August & 7
September 2024

42

COMMUNITY MEMBERS

Engaged directly

94

CUBIC METRES

Flood waste removed

40

VOLUNTEERS

Participated

17%

ABOVE GRANT

Organisational
contribution

109%

RETURN ON INVESTMENT

Environmental return

5

STAFF

Participated

2,000+

REACH

Social media

500+

FLYERS

Distributed

50%

TARGET

Household
engagement achieved

Calculated Impact Metric

Metric	Calculation	Outcome
Waste Removed per Household Engaged	94 m ³ / 27 homes	3.48 m ³ per home
Waste Removed per Volunteer	94 m ³ / 40 volunteers	2.35 m ³ per volunteer
Resident-to-Volunteer Ratio	42 residents / 40 volunteers	~1:1 support ratio
Community Engagement Efficiency	42 individuals / 84 targeted	50% participation rate
Value of Waste Diversion (est. landfill cost \$180/m ³)	94 m ³ × \$180	\$16,920 saved in landfill costs
Return on Investment (ROI)	\$16,920 environmental savings ÷ \$15,450 expenditure	1.09 ROI (109%)



Resident and Volunteer Feedback

Feedback Theme	% of Respondents	Representative Comment
Appreciation for support	95%	“Such a blessing you are, 10-fold in return for the amazing work.” – Vao Palelei
Desire for regular clean-ups	88%	“We need this every month for flood-risk areas.”
Improved understanding of flooding	75%	“Now I know how to keep my property ready for storms.”
Cross-community connection	70%	Volunteers learned about residents’ lived experience with flooding.

Community and Social Outcomes

Outcome Area	Quantitative Indicator	Description
Empowerment & Kaitiakitanga	89% of participants expressed pride and motivation to protect waterways (based on post-event interviews and messages)	Residents expressed renewed sense of guardianship for their local stream.
Knowledge Sharing	100+ Auckland Council flood-preparedness flyers distributed	Supported increased household readiness and awareness.
Community Cohesion	6 instances of neighbours assisting each other with waste removal	Reinforced mutual aid and connectedness.
Volunteer Education	40 volunteers completed taiao and flood-safety induction	Volunteers gained understanding of storm impacts and mitigation.
Communication Reach	500+ flyer deliveries & online engagement (Facebook reach est. 2,100)	Extended awareness beyond direct participants.

Summary

Harania Awa mahi combines hands-on restoration, education, and cultural transmission, producing visible environmental health and systemic advocacy for long-term awa resilience.

Harania Awa stands as a symbol of collective regeneration in Māngere — where residents, tamariki, and organisations come together to heal a once-degraded stream.

With over 340 locals engaged, 170 children educated, and 47 environmental interventions logged, the awa is not just recovering — it's becoming a living classroom, a source of identity, and a unifying taonga for our community.

“The positive feedback and encouragement we’ve received reflect the real change happening here. The future of our stream is bright.”



Pest-Free Māngere-Ōtāhuhu

The Pest-Free mahi demonstrates both technical skill and large-scale community mobilisation.

Achievements

- **3 new pest control networks established** across Council reserves (Blake Road, Radonich Park, Walter Massey Homestead).
- **Trapline management continued** along Harania Stream with 16 predator catches this year.
- **Moth Plant Competition 2025:** 18 kura and community teams collected 40,874 pods/vines, showcasing collective regional impact.
- **Pest-Free Tool Library launched**, supporting households to lead pest control on private properties.
- **Weekly Taiao Service Days** built community rhythm and trust, attracting new volunteers and developing conservation skills.



Young volunteers setting some traps for a pest-free Māngere-Otahuhu

Cross-Regional Collaboration

- **Joined Pest-Free South Auckland Activator** exchange in Papakura, gaining hands-on technical guidance and strengthening South Auckland partnerships.

Impact

- Improved biodiversity and volunteer capacity.
- Embedded ecological literacy through school partnerships.
- Expanded digital storytelling via the Pest-Free Māngere-Ōtāhuhu Facebook page, engaging thousands regionally.



Waste Regeneration

From July 2024 to June 2025, the Waste Regeneration team at ME Family Services continued to advance Auckland's journey toward a zero-waste future. Through hands-on education, community-led initiatives, and circular economy actions, the team empowered whānau, schools, and local organisations to reduce, reuse, and regenerate - creating lasting change for people and place.

Community Engagement and Education

The Waste Regeneration team delivered a total of 90 engagement activities, contributing significantly to Auckland's zero-waste movement.



- 54 waste education activities reached 682 participants, deepening understanding of waste minimisation and sustainable living practices.

These included:

- 1 canvassing activity
- 12 presentations
- 13 community conversations
- 4 waste audits
- 6 working bees
- 2 tours of zero-waste facilities
- 1 information stall
- 15 practical workshops

These engagements nurtured hands-on learning, supported behaviour change, and inspired everyday actions toward waste reduction across Māngere and wider Auckland.



Waste Diversion and Circular Economy Actions

The team facilitated 14 waste diversion activities, attended by 210 participants, to keep valuable resources in circulation and reduce landfill contributions.

This included:

- 11 instances where materials were recovered and redistributed back into the community.
- 2 repair or reuse events such as Repair Cafés, clothing swaps, and second-hand markets.
- 1 consultation supporting an Auckland event to achieve zero-waste outcomes.

Together, these initiatives diverted significant waste from landfills, promoted creative reuse, and strengthened local circular systems.



Partnerships and Collaboration

Collaboration remained central to the kaupapa. The Waste Regeneration team partnered twice with Auckland Council programmes and community organisations, engaging 32 participants in community-led waste initiatives.

The team also:

- Attended 7 networking events to promote zero-waste practices.
- Hosted 13 networking hui to celebrate, connect, and inspire community-led waste minimisation. These events attracted a combined 57 participants, strengthening relationships and fostering a sense of shared purpose across the region.

Volunteer and Community Contribution

Volunteers contributed 33 hours of mahi this year, supporting waste audits, recovery events, and education workshops. Their commitment reflects the collective spirit that underpins ME Family Services' approach — community-led action for community benefit.

Communications and Outreach

To amplify impact and storytelling, the Waste Regeneration kaupapa was promoted 109 times through social media and online platforms, reaching 14,085 views and generating 1,017 engagements (likes, comments, shares, and clicks).

These communications highlighted local champions, showcased community success stories, and encouraged others to take part in the zero-waste movement.

Impact Snapshot

922

PARTICIPANTS

Directly involved in waste education, diversion, and networking

33

TOTAL HOURS

Volunteer hours contributed

10+

TONNES OF WASTE

Diverted from landfill through collective community action

90

TOTAL ENGAGEMENT

Successfully delivered

14,085

ONLINE REACH

Through zero-waste promotion

Conclusion

The Waste Regeneration team continues to demonstrate what's possible when community-led action meets shared purpose. Every conversation, workshop, and reuse event contributes to a healthier, more resilient Māngere — where waste is seen not as a problem, but as a resource with new life and purpose.

Together, we are building a thriving and regenerative people and place — one action, one conversation, and one recovered resource at a time.



Strategic Oversight & Future Direction

The Taiao Team's integrated model creates triple impact — environmental health, community empowerment, and cultural regeneration.

Key Successes

- Growth of volunteer networks and whānau champions.
- Expansion of partnerships with kura, tertiary institutions, and Mana Whenua.
- Increasing national visibility through collaborations with Auckland Council, Whitebait Connection, and Blue Green Network.

Challenges

- Rising demand with limited staffing capacity.
- Time-intensive short-term funding contracts.
- Environmental disruptions (weather, construction) impacting delivery cycles.

Recommendations for Funders

1. Multi-Year Investment: Secure at least three-year funding to stabilise delivery and deepen relationships.
2. Workforce Development: Invest in training and succession pathways to retain skilled kaimahi.
3. Longitudinal Impact Tracking: Resource biodiversity monitoring and cultural outcome reporting over multiple years.
4. Systems Change Funding: Support advocacy, policy engagement, and Council collaboration to scale impact regionally.

Summary

The Taiao programme has evolved into a flagship of community-led climate action — blending science, mātauranga Māori, and social cohesion. With sustained investment, it will continue to cultivate intergenerational stewardship for Māngere and Ōtāhuhu's people, whenua, and waterways.

Taiao Team Captured Stories



Harania Strategic Working group September 2024



Community Day - Pest-Free South Auckland



Destiny nominated for Zero Waste Awards October 2024



Rangatahi repairing clothing at Repair Cafe



Purchasing supplies from Compost Collective grant



Tool Station for Repair Cafe

Our Early Childhood Education (ECE) service continues to provide a nurturing, inclusive, and culturally grounded environment where tamariki thrive. This year we focused on increasing participation, strengthening whānau engagement, and embedding sustainability practices into daily routines.



ECE'S MAHI AT A GLANCE

Enrolments & Growth

6



ENROLMENT GROWTH

From 45 (Oct 2024) to 51 (June 2025) — with steady balance of under-2s and over-2s.

Notably, several generational enrolments, with children of past pupils now attending the centre, reflecting deep community trust.

Professional Development & Quality

- Kaiako actively engaged in professional learning:
 - Rongoā Māori workshop for wellbeing and curriculum integration.
 - Ongoing policy and philosophy review.
 - Teacher registration up to date; support for MIT graduate Tearoa beginning registration process.
- ERO compliance confirmed, with all corrective actions resolved.
- Non-contact time improved through additional relievers (Anita, SungHee, KellyAnne), resulting in more completed learning stories and improved documentation.

Events & Community Involvement

6



CULTURAL CELEBRATIONS

ECE hosted cultural celebrations for Samoan Language Week, Matariki, Cook Islands, Tongan, Niuean, and Māori Language Weeks.

10-30



WHĀNAU

Attendance per event, strengthening home-centre connections and promoting cultural pride.

3,000+



MEALS PROVIDED

Kidscan Kai Programme introduced early 2025, transforming lunchtime culture - calmer mealtimes and reduced food waste. These meals includes morning tea, Lunch and afternoon tea for all the children enrolled.

Visits from Te Poho o Rawhiti, O Lou Ala i Malo, Rota'ianga and Kafa Taha units from MEPs plus EC tamariki attending school assemblies, reinforced tuakana-teina connections between local schools and ECE tamariki.

Whānau Feedback

“The centre and staff make you and your tamariki feel welcome. It’s also convenient for me as my older kids go to Mangere East Primary and when you are in need of help, they are there to help you”

– Ana



“We love the centre, the staff are all so friendly and welcoming, and it truly feels like ‘whanau vibes’. We send both our kids there because it’s such a warm, open environment where they can learn, have fun and connect...plus having their Nan work there as well is a special bonus for the kids”

– Liahona

“It is close to our house and the other thing is the good service you provide in looking after my children and how much you help me and my children. I am also happy to hear that many of the staff speak Samoan. and always love, respect and kindness”

– Liua



“All my children have been through this centre, I’ve been dropping them off for the past 13 years. They have supported me with all my children, giving a comfortable safe space for them to be themselves. The teachers are welcoming, they teach well while making sure the kids still have fun. They are culturally diverse and bring positive energy throughout the centre.”

– Melanie

- Families consistently expressed gratitude for free kai programmes and school transition visits.
- Many highlighted feeling a strong sense of belonging and connection, with feedback emphasising tamariki excitement and engagement in cultural activities.

Promoting Sustainability & Practicing Manaakitanga for Papatūānuku

Sustainability continues to be embedded in our daily ECE practices, nurturing tamariki understanding of kaitiakitanga from an early age.

3,920

DISPOSABLE NAPPIES

Prevented from entering landfill due to use of cloth nappies.

11,000

DISPOSABLE WET WIPES

Prevented from entering landfill due to use of reusable flannels, which significantly reduce waste.

56

TAMARIKI AND KAIAKO

Practised recycling, reusing and composting as part of daily tikanga.

These actions not only protect Papatūānuku but also help whānau save money and model sustainable habits for the next generation.



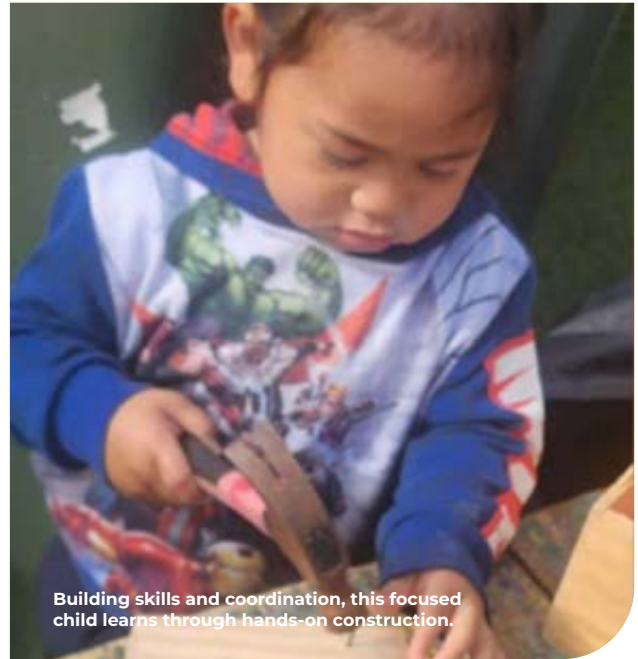
Looking Ahead

We remain committed to supporting tamariki and whānau to learn, grow, and belong in an environment that celebrates their culture, strengthens wellbeing, and cares for the environment. Our vision continues to guide us: *A thriving and regenerative people and place, where every child's potential is nurtured from the earliest years.*

ECE Captured Stories



Fine motor skills and creativity blossoming as little hands play with paint.



Building skills and coordination, this focused child learns through hands-on construction.



Stacking blocks builds spatial reasoning and problem-solving skills, one tower at a time.



A child's curiosity is the seed of discovery and lifelong learning.



Dressed in tradition, these children are building confidence and developing cultural awareness through performance.



Shared focus and teamwork! Playing with puzzle beads together nurtures social skills and fine motor precision.

MEFS - Sponsorships

Overview

ME Family Services continues its proud tradition of supporting local initiatives that reflect our vision of **“A thriving and regenerative people and place.”**

Our sponsorships aim to **empower tamariki, whānau, and community groups** that demonstrate innovation, collaboration, and positive impact for **Te Taiao and our people.**

Māngere East Hawks Premier Men’s Team

Our partnership with the **Māngere East Hawks Premier Men’s Team** featured **ME Family Services branding on the team tracksuit sleeves and club gazebo**, representing unity and community pride. This sponsorship affirms our shared values of teamwork, perseverance, and local leadership.

The Premier Men’s team finished fifth after the Round Robin for the 2025 Sharman Cup. Although they did not progress to the finals, we congratulate the team on a strong season — winning six of their ten games played. Their effort, discipline, and commitment continue to embody the spirit of Māngere East both on and off the field.



Taonga Sponsorship – Year 5 & 6 Speaker (2nd Place Overall)

ME Family Services proudly sponsored the taonga presented to the Year 5 & 6 Speaker who achieved 2nd place overall. The engraved inscription on the taonga reads:

“He koha nā ME Family Services.”

The taonga is a hue (gourd) mounted on a wooden base. Traditionally, the hue served as a vessel for nourishment—used to hold kai or water within its strong, protective shell. This symbolism reflects the role of ME Family Services within our community - providing care, sustenance, and protection for our schools and whānau, supporting their growth and wellbeing from within a nurturing and resilient framework.

U11 White Leopards

Purpose of Sponsorship

The generous \$300 sponsorship from ME Family Services was used to fund 4 Tackle Domination Training Sessions facilitated by Iron Up Sports for the U11 White Leopards. This specialised session focused on breaking down the fundamentals of safe and effective tackling, ensuring our players entered the 2025 season with the knowledge and confidence to tackle correctly - minimising injuries and improving overall team performance.

Our boys gained:

- Confidence in physical contact and body positioning
- Techniques to protect themselves and others on the field
- Understanding of defensive structure and teamwork
- Increased trust between players and coaches

This training not only strengthened their individual skills but also built stronger whanaungatanga across the team.

Season Highlights

The U11 White Leopards displayed outstanding growth throughout the season — both in skill and sportsmanship.

The impact of the early tackle training was evident in every game, with the team showing improved defensive coordination and tackling confidence.

- Games Played: **10**
- Games Won: **8**
- Games Drawn: **2**
- Games Cancelled due to weather: **3**

Our players' ability to stay injury-free and play with confidence was one of our proudest achievements this season. Coaches also noted a significant reduction in fear-based hesitation during tackles - showing that the training directly contributed to safety and success.

This year, the U11 White Leopards were awarded **"MOD Team of the Year 2025"** by **Otago Rovers Rugby League Club** at the Club's end-of-year prizegiving.

We were given the opportunity to extend our season; however, we chose to conclude our regular season as 80% of our players were selected to represent their respective nations at either the 2025 Pacific Wellness Carnivals in Auckland or the Aotearoa New Zealand Rugby League Tournament in Rotorua.





Impact on Tamariki

The benefits of this investment went far beyond the scoreboard:

- **Players developed discipline, teamwork, and resilience.**
- **Many gained the confidence to take on leadership roles within the team.**
- **Parents reported increased self-esteem and pride in their children's achievements.**
- **The team's unity and skill have become a source of pride for our wider community.**

Acknowledgement

We extend our heartfelt gratitude to ME Family Services for supporting our young athletes. Your investment helped create a foundation of safety, skill, and confidence that our players will carry with them well beyond this season.

Your continued support shows our tamariki that their community believes in them — and that makes all the difference.

Ngā mihi nui,

**U11 White Leopards Management & Whānau
Otago Rovers Rugby League Club**

***"Ka whāngaia,
ka tipu, ka puāwai."***

"That which is nurtured will grow, then blossom."

Mura Mura Ātea and MEFS Partnership

Mura Mura Ātea is a creative empowerment space guided by a **Moana-nui worldview**, focused on igniting the “**divine spark**” and creativity in youth and whānau through cultural grounding, connection to nature (taiao), and storytelling. This year, they delivered their mission through diverse activities including workshops, markets, and exhibitions.

Key Highlights & Progress

Global Connection: Experienced significant growth and inspiration through international Indigenous exchanges, including travels to Samoa, Chile, Rapa Nui, and Maine (USA), which profoundly shaped the organisation’s vision.

Operational Support: The organisation’s strength is rooted in its collaborations, notably the Operational Support & Resource Sharing provided by partners, including the **MEFS Resource Room**, Critical., Resene Paints, and Metro Commercial Interiors.

The acknowledgements specifically thank the **ME Family Services Board** and **CEO Carole** for providing an amazing space and unwavering support.

Health and Safety: Made major improvements to the Tidal Road workshop space and built a robust health and safety culture in partnership with SiteSafe New Zealand, which awarded the team a scholarship for critical safety training.

Professional Development: Invested heavily in capability building through 30+ training and research opportunities and completed an intensive, year-long Team Management and Leadership program to set a sharper, informed vision for the future.

Artistic Output: Achieved major success with the group’s first exhibition at the Mangere Arts Centre, with a further exhibition confirmed, including a solo exhibition for Mike in August 2026.

MURA MURA ĀTEA’S MAHI AT A GLANCE

Community Reach	Sharing Our Work	Capability Growth	Capability Growth
<p>56 FREE WORKSHOPS</p> <p>~500 PARTICIPANT ENGAGEMENTS</p> <p>2 BEACH CAMP WĀNANGA HOSTED</p>	<p>3 MARKET STALLS</p> <p>2 EXHIBITIONS AT PRESTIGIOUS GALLERIES</p>	<p>29+ TRAINING & RESEARCH OPPORTUNITIES</p> <p>1,400+ HOURS OF RESEARCH AND DEVELOPMENT</p> <p>9 FUNDING APPLICATIONS</p> <p>17 MMA MEMBERS</p>	<p>55+ COLLABORATIVE PARTNERSHIPS</p> <p>11+ SPONSORS & DONORS</p> <p>3 COUNTRIES VISITED FOR KNOWLEDGE EXCHANGE</p> <p>2 INTERNATIONAL INDIGENOUS VISITORS HOSTED</p>

Looking Ahead to 2026

The focus is on securing sustainable funding, establishing a viable revenue model, delivering targeted creative and wellbeing programs for youth, and strengthening governance and organisational capability for long-term stability.

Mura Mura Ātea & MEFS Captured Stories



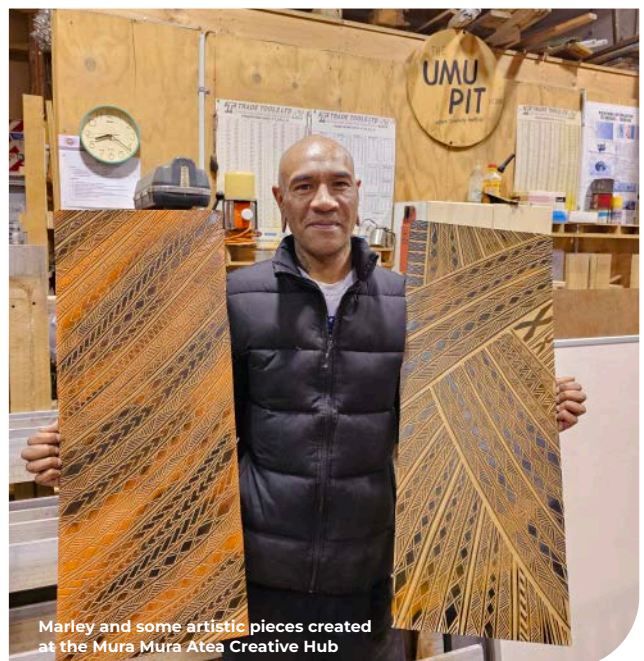
Participants of a Mura Mura Atea



Master Sio working on a traditional Samoan Weapon



Young Niko excited to get into some Woodblock Carving



Marley and some artistic pieces created at the Mura Mura Atea Creative Hub

Auckland Airport's "Twelve Days of Christmas" Grant

ME Family Services was honoured to receive a \$10,000 grant through Auckland Airport's "Twelve Days of Christmas" giving programme.

This support enabled us to distribute 150 Christmas food boxes filled with pantry staples and festive treats to whānau across Māngere and Ōtāhuhu, helping ease cost-of-living pressures during the holiday season.

A significant portion of the grant contributed to the Life Community Christmas Boxes Initiative,

while a smaller portion was used to purchase Christmas gifts for tamariki in our community, spreading joy and connection during this special time.

This ongoing partnership with Auckland Airport reflects our shared commitment to manaaki and community resilience, ensuring South Auckland families feel supported and valued during the festive season.



ME Family Services - Financial Statements Summary

(For the Year Ended 30 June 2025)

Income Statement Overview

(For the Year Ended 30 June 2025)

ME Family Services (MEFS) continues to demonstrate strong financial stewardship as a charitable organisation, maintaining healthy reserves while expanding its impact across Manaaki Tangata, Taiao, and Early Childhood Education (ECE) programmes.

During this period, all Manaaki Tangata staff were affected by funding uncertainty following government announcements to cease contracts for community social work. Through the support of the Department of Internal Affairs and the Four Winds Foundation, MEFS was able to retain these staff. Confirmation of extended government funding was received in January 2025, covering services until March 2025, with the Board approving continued support through to June 2025.

The reported net surplus includes temporary savings from short-term vacancies, as several team members transitioned into sustainable employment opportunities and their positions remained unfilled before being reviewed or refilled.

We also acknowledge the significant \$100,000 donation from Te Whare Marama – Women’s Refuge, which strengthened our ability to support vulnerable whānau across Māngere and Ōtāhuhu.

For the 2025/2026 financial year, MEFS projects an operational deficit of approximately \$474,000, reflecting planned investments in:

- **Building and vehicle maintenance**
- **Finance and administration capability**
- **Early Childhood Education subsidies**
- **Taiao and Manaaki Tangata programmes**

Revenue (Financial Year 2024/2025)

Total Revenue: \$3,697,725

Funding Source	Amount (\$)	% of Total	Notes
Oranga Tamariki / MSD / WINZ contracts	2,108,107	57.01%	Primary government service delivery
Ministry of Education (MOE) contracts + Use of Land Grant	918,380	24.84%	Early Childhood & facility support
Auckland Council Funding	113,794	3.08%	Local and community projects
Foundation North	113,050	3.06%	Environmental and regenerative initiatives
Department of Internal Affairs and other Grants	60,000	1.62%	Environmental initiatives
Donations / Koha / Fundraising	179,920	4.87%	Community donations and events
Interest and Investment Income	80,371	2.17%	Term deposits and interest earnings
Other Revenue	124,103	3.36%	Miscellaneous recoveries and service income
Total	3,697,725	100%	

(Rounded percentages)

Expenditure (Financial Year 2024/2025)

Total Expenditure: **\$3,265,157**

Programme / Category	Amount (\$)	% of Total	Description
Employee Remuneration & Related Costs	2,749,873	84%	Salaries, wages, training and staff support
Board Expenses	25,799	1%	Governance and Strategic Oversight
Occupancy Cost	113,816	3%	Rent, Rates, Utilities and Maintenance
Operational Costs	245,202	8%	Accountancy, Programs, Vehicle and ICT costs
Grants and Donations Made	1,235	<1%	Koha and sponsorships
Depreciation & Non-Cash Costs	129,232	4%	Depreciation and notional lease for property
Total	3,265,157	100%	

(Employee costs remained stable; operational savings were achieved through tighter procurement and reduced consultancy costs.)

Summary of Key Financial Indicator

(Year Over Year)

Indicator	FY 24/25	FY 23/24
Total Income	\$3.70 M	\$3.71 M
Total Expenses	\$3.26 M	\$3.37 M
Surplus / (Deficit)	+\$432,568	+\$358,826
Total Assets	\$3.64 M	\$2.99 M
Total Liabilities	\$0.62 M	\$0.41 M
Net Assets	\$3.01 M	\$2.58 M

Audit Statement

These accounts have been audited by Blackmore, Virtue & Owens is a long-established Chartered Accountancy Firm. The full audited Annual Performance Report for the year ending June 30, 2025 is available on the ME Family Services website or upon request via email: office@mefsc.org.nz

Financial Position Statement (As at 30 June 2025)

ME Family Services remains in a strong financial position, with net assets of \$3.09 million, representing an increase of \$511,538 from the previous year's \$2.58 million.

The organisation continues to maintain reserves for long-term sustainability, future office acquisition, and to ensure operational resilience in times of uncertainty.

Property Sponsorship – Muramura Ātea Creative

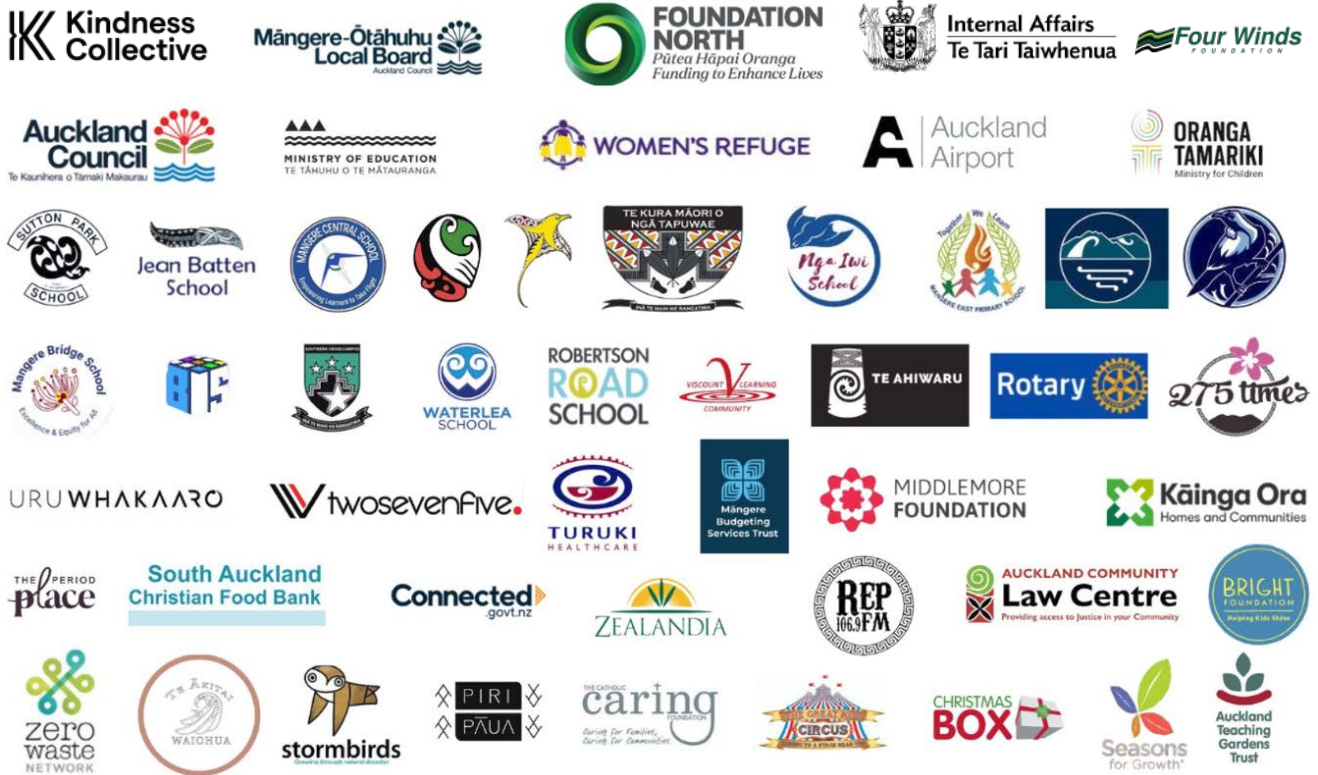
ME Family Services sponsors the annual rent of its Tidal Road property, valued at \$37,594 per annum, supporting Muramura Ātea Creative's community and cultural initiatives that align with our shared values of creativity, connection, and wellbeing.

Summary

The 2024/2025 year reflects MEFS's continued commitment to prudent financial management and community investment. MEFS continues to reinvest surplus funds into initiatives that uphold our mission of "empowering children and whānau to find the potential within Māngere and Ōtāhuhu."

Acknowledgements

Thank you to our funders, sponsors and partners who made our work possible this year.



“Ehara taku toa i te toa takitahi, engari kē he toa takitini”

“My strength is not that of an individual, but that of many.”



***“A THRIVING AND
REGENERATIVE
PEOPLE AND PLACE”***



© ME Family Services (MEFS).

Phone: 09 256 0810

Email: mefsc@mefsc.org.nz

Website: www.mefsc.org.nz

Address: 16/18 Ferguson Street, Māngere East, Auckland